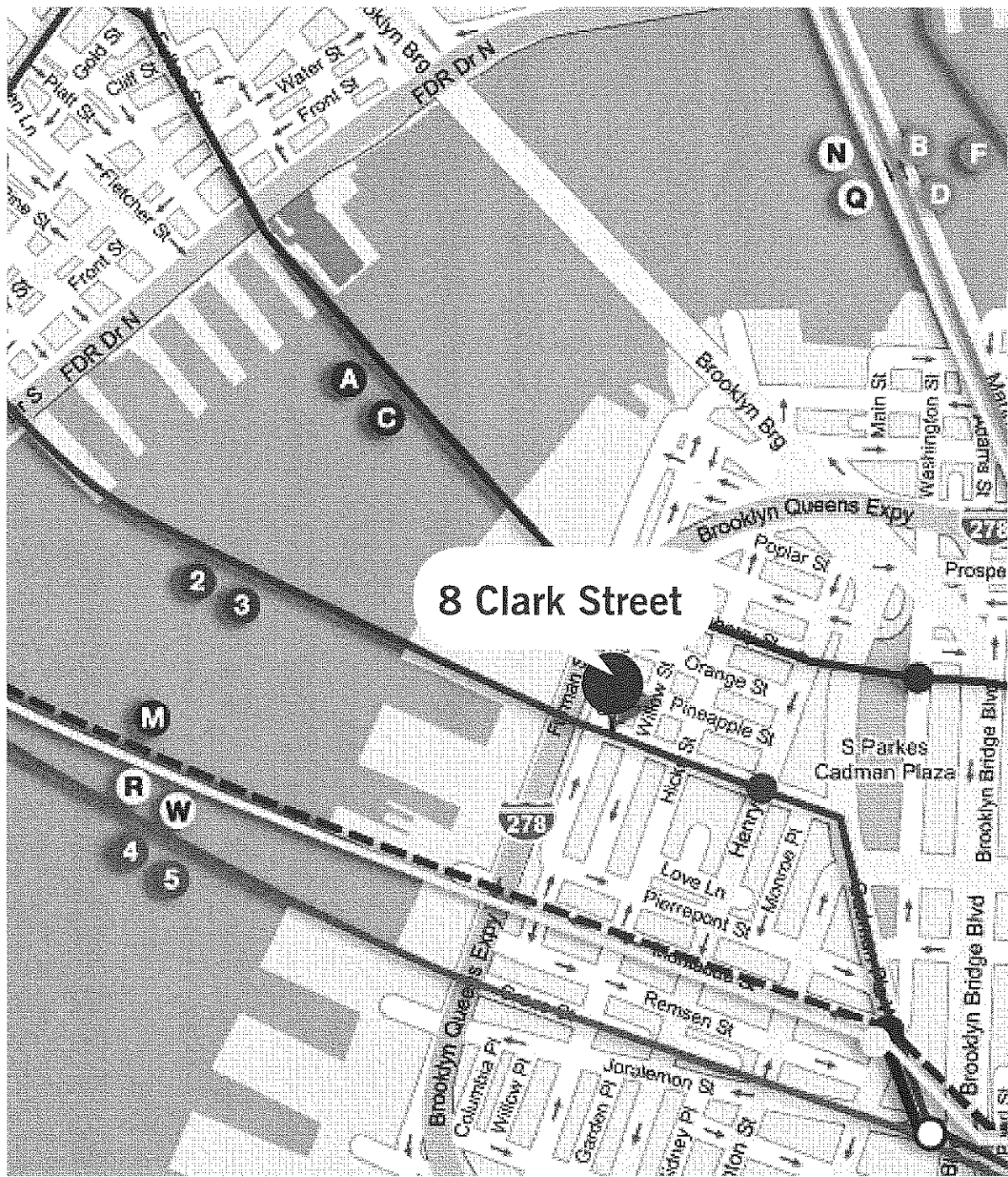
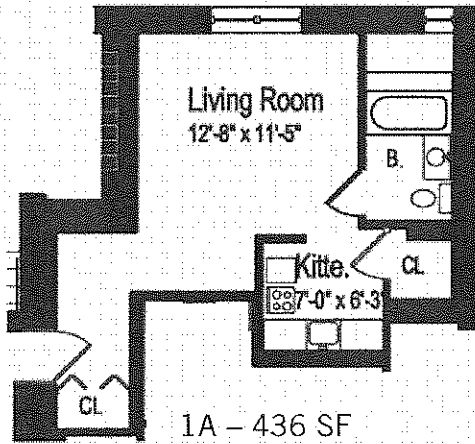


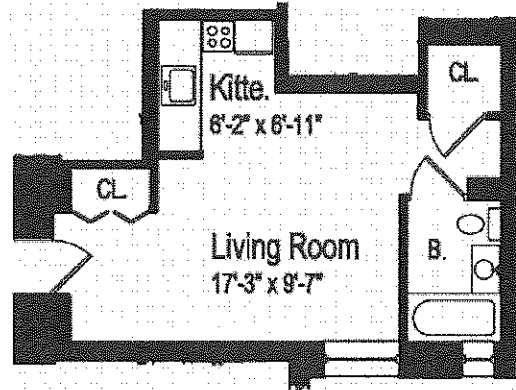
8 Clark Street



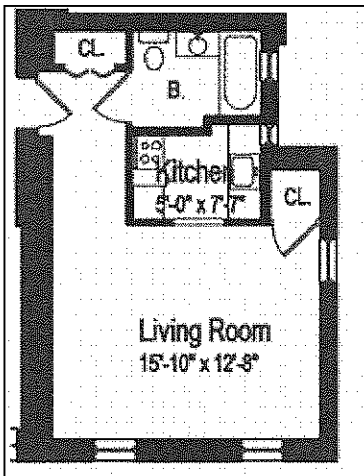
8 Clark Street



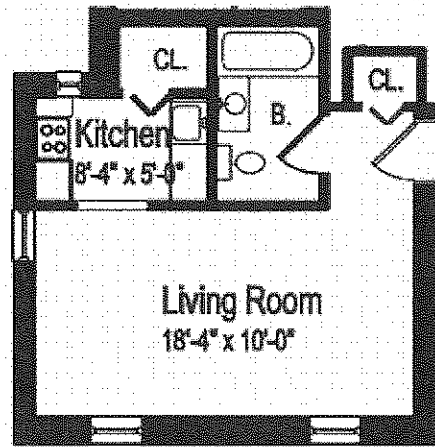
1A - 436 SF



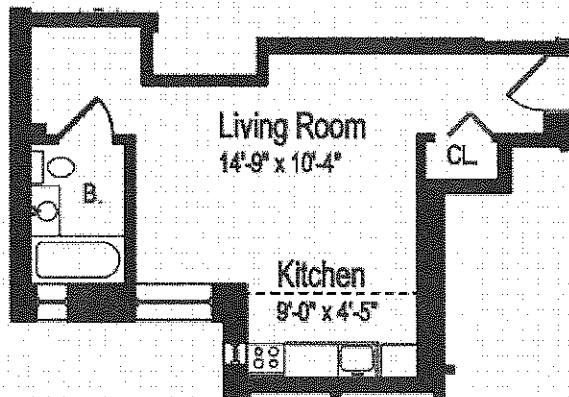
1B - 386 SF



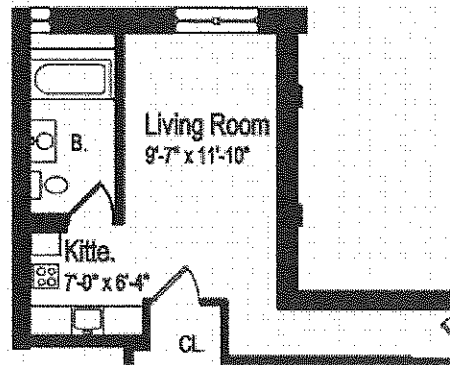
1C - 439 SF



1D - 380 SF

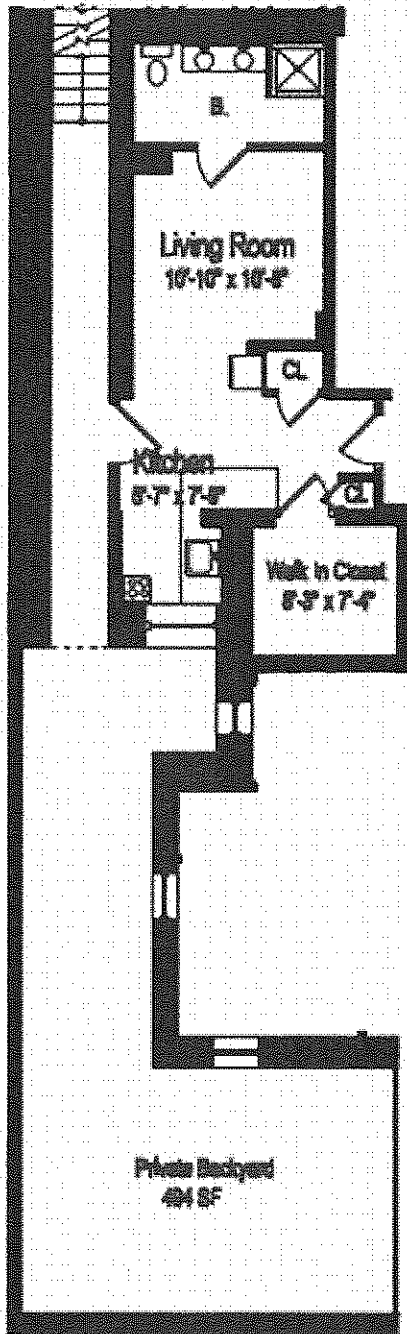


1E - 392 SF

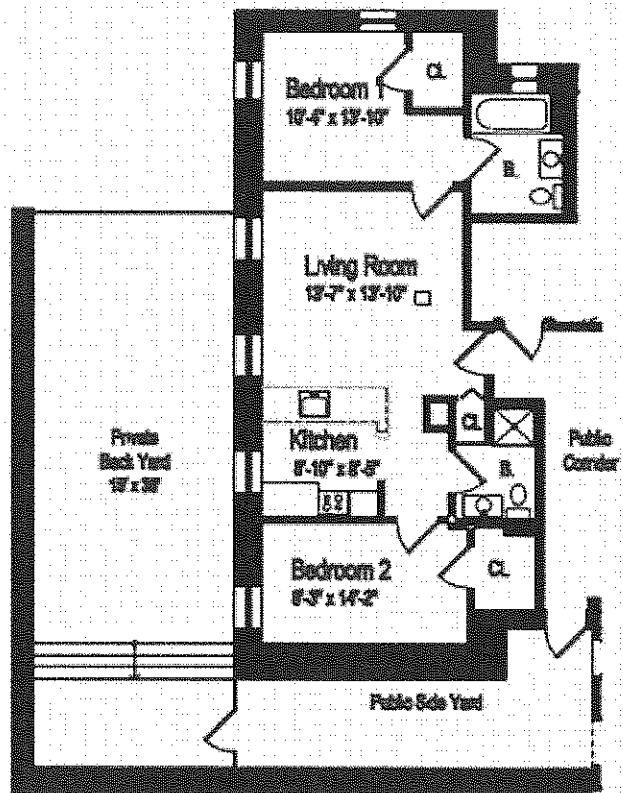


1F - 419 SF

8 Clark Street



Cellar
OA - 531 SF



Cellar
OB - 911 SF

8 Clark Street

Clark Street – One of “5 best Brooklyn blocks to live on.”
–L Magazine



Located half block
from the Brooklyn
Promenade

- Brooklyn Heights is a neighborhood within the New York City borough of Brooklyn; originally designated through popular reference as 'Brooklyn Village', it has, since 1834, become a prominent area of the Brooklyn borough. As of 2000, the Brooklyn Heights sustained a population of 22,493 people. The neighborhood is part of Brooklyn Community Board 2. The neighborhood is served by the NYPD's 84th Precinct.
- Brooklyn Heights stretches from Old Fulton Street near the Brooklyn Bridge south to Atlantic Avenue and from the East River east to Court Street and Cadman Plaza. Adjacent neighborhoods are: DUMBO, Downtown Brooklyn, Cobble Hill and Boerum Hill. It is directly across the East River from Manhattan, and easily accessible to Downtown and multiple subway lines.
- The neighborhood is largely composed of block after block of picturesque rowhouses and a few mansions. A great range of architectural styles are represented, including a few Federal-style houses from the early 19th century in the northern part of the neighborhood, brick Greek Revival and Gothic Revival houses, and Italianate brownstones. A number of houses, particularly along Pierrepont Street and Pierrepont Place are authentic mansions. Brooklyn Heights was the first neighborhood protected by the 1965 Landmarks Preservation Law of New York City. Plymouth Church of the Pilgrims and Our Lady of Lebanon Maronite Catholic Cathedral are in Brooklyn Heights.

4 BLOCKS AWAY FROM HILLSIDE PARK

This Brooklyn Heights park, aptly named for the sloping space it occupies, is located east of Columbia Heights and south of Vine Street. Acquired by Parks in 1946 and in 1947 during the proceedings for the mapping of the Brooklyn-Queens Expressway, then known as the Brooklyn-Queens Connecting Highway, this site was not needed for the highway construction itself, so it became parkland.

3 BLOCKS AWAY FROM BROOKLYN BRIDGE PARK

The Brooklyn Bridge Park site is long and narrow with a crenulated edge formed by the piers. The site stretches west in an arc from the Manhattan Bridge, through the Brooklyn Bridge and south along the East River to the upland area of Pier 6 and Atlantic Avenue. It is dotted with a number of former industrial and shipping buildings. Access to the site is restricted by the BQE, which also generates a lot of noise. The site is a major gateway into Brooklyn and provides unparalleled views of lower Manhattan Bridges and New York Harbor.